

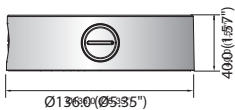
Backbox

	SBV-136B	SBV-158G	SBF-100B1	SBO-100B1
Materials	Aluminum	Aluminum	Aluminum	Aluminum
Dimensions (WxHxD)	Ø136.0 x 40.0mm (Ø5.35" x 1.57")	Ø158.0 x 40.0mm (Ø5.91" x 1.57")	Ø149.2 x 40.0mm (Ø5.87" x 1.57")	Ø125.6 x 45.0mm (Ø4.95" x 1.77")
Weight	345g (0.76 lb)	380g (0.84 lb)	345g (0.76 lb)	320g (0.71 lb)
Color	Ivory	Ivory	Ivory	Dark gray
Applicable Model	SNV-L6083R/L5083R SCV-6083R/6023R/5085/5083R/ 5083R/5082	SNV-8081R/7084R/7084/6084R/ 6084/5084R/5084	SNF-8010/8010VM	QNO-7080R/6070R/ 7010R/7020R/7030R/ 6010R/6020R/6030R SNO-L6083R/L5083R/ L8085R/L6085R SCO-6083R

* The latest product information / specification can be found at <http://security.hanwhatechwin.com>

Dimensions

Unit : mm (inch)



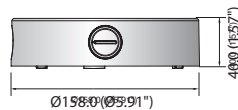
Ø136.0 (Ø5.35")

40.0 (1.57")



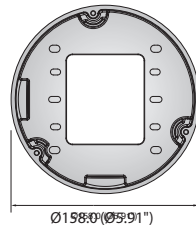
Ø136.0 (Ø5.35")

SBV-136B



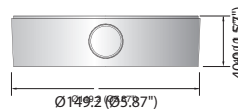
Ø158.0 (Ø5.91")

40.0 (1.57")



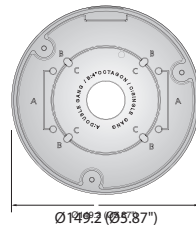
Ø158.0 (Ø5.91")

SBV-158G



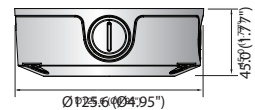
Ø149.2 (Ø5.87")

40.0 (1.57")



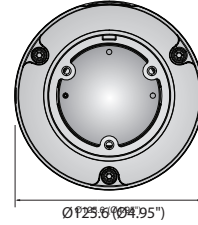
Ø149.2 (Ø5.87")

SBF-100B1



Ø125.6 (Ø4.95")

45.0 (1.77")



Ø125.6 (Ø4.95")

SBO-100B1